

# **South Dakota Manufacturers Showcase**



# **Brookings SD**

## **Health Care Business Group**



Dressings



Adhesive  
Skin Closures



Compression Therapy

Medical Tapes



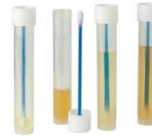
# OUR PRODUCTS

3M Brookings manufactures hundreds of medical and surgical products ranging from surgical tapes, drapes and dressings to food safety products, biological indicators and cold/hot packs.

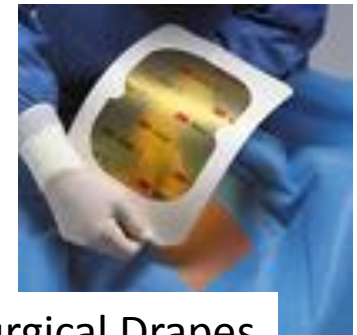


Biological  
Indicators

Food Safety



Self-Adherent Wraps



Surgical Drapes



**3M Brookings**  
recognized by  
Prairie Business Magazine  
as one of their 2014  
**50 Best Places to Work**  
in the northern Plains



## OUR PEOPLE

In 2014, the 975+ 3M Brookings employees produced 83.4 million pounds of products for worldwide distribution.







**Aberdeen, SD**  
**Safety & Graphics,**  
**Industrial and Consumer Business Groups**



## Respirators

### OUR PRODUCTS

3M Aberdeen manufactures respirators for industrial and consumer use, tape for automotive, electronic, industrial and aerospace applications, and furnace filters for consumer use.



Filtrete™



Auto Exterior  
Attachment Tape



Aerospace PPT  
Boots & Tape





**Congratulations!**  
**3M Aberdeen**  
**One of**  
**INDUSTRYWEEK'S Best**  
**Plants for 2014**



## **OUR PEOPLE**

In 2014, 3M Aberdeen employees produced  
243 million respirators and  
19,712,000 yards of tape for worldwide distribution.



# **DeSCo Architectural Inc. - De Smet SD**

**A South Dakota manufacturer since 1970.**





# Manufacturing

1,100+ manufacturers in the state of South Dakota



**DeSCO**  
Careers With Benefits





# High Skill Jobs for the Future

In a high-tech manufacturing environment.





A high-angle photograph of an office interior. A woman with blonde hair, wearing a light blue top, is seated in a brown leather office chair at a long, modern desk. She is holding a telephone receiver to her ear. The desk is dark with a light-colored top and has various office supplies, including a Samsung monitor and a small yellow object. The office has large windows on the left, letting in bright sunlight that casts long, dark shadows of the desk and chairs onto the carpeted floor. In the background, there are more cubicles and office furniture. A green jacket is hanging on a stand near the windows.

**Huge Economic Benefits for South Dakota.**  
**Manufacturers provide jobs with good pay and benefits.**

The DeSCO logo consists of a red square with a white 'X' shape inside, formed by two diagonal lines.

**DeSCO**  
Careers With Benefits



# Global Reach

DeSCo Windows are shipped all over the world.



**DeSCo**  
Careers With Benefits





# Engineered Green For LEED Certification



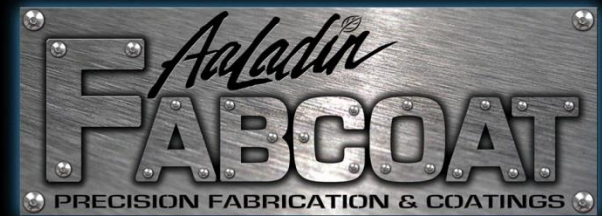
- Schools
- Businesses
- Government Buildings
- Apartment Buildings

## Architectural Windows

De Smet, SD  
[descoarc.com](http://descoarc.com)

# Aladdin

INDUSTRIES INC.



Aladdin

CLEANING SYSTEMS





# Who We Are



A group of companies dedicated to innovation and the manufacture of industry leading products.





# What We Value

**Above all else we value:**

- Integrity
  - Excellence
  - A Profound Respect for the Individual
- 

**We also value and take pride in:**

- Midwest - USA built quality.
- Innovation with a common sense approach to problem solving.
- Rigorous attention to quality products.





# AaLadin Products

# AaLadin®

CLEANING SYSTEMS

- Pressure Washers
- Parts Washers
- Water Heaters
- Waste Oil Heaters

- **Accessories:**

Hose Reels

Surface Spinners

Undercarriage Cleaners

Vacuum Systems

& More!

- **Parts**

- **Detergents**
- **Chemicals**
- **Unmatched Support!**



*Team AaLadin* ELITE  
**DISTRIBUTOR**  
AUTHORIZED

Proudly made in the USA  [www.aaladin.com](http://www.aaladin.com)



# AaLadin Products

**All brought to market by our International group  
of hand picked distributors...**

*Team* **AaLadin**® ELITE  
**DISTRIBUTOR**  
— AUTHORIZED —





**STEEL  
EAGLE**

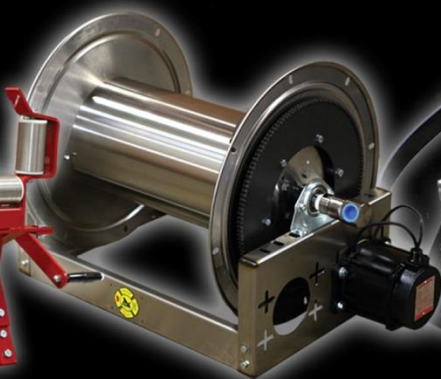
**PRESSURE WASHING ACCESSORIES**

# Steel Eagle Products

**HELPING MAKE YOUR LIFE EASIER...  
ONE ACCESSORY AT A TIME.**

## **FEATURING:**

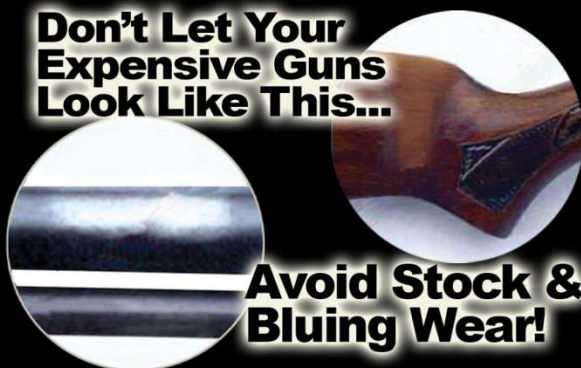
- Hose Reels • Vacuum Systems
- Clean and Capture Systems
- Waste Water Recycling Systems
- Surface Spinners • Water Heaters
- Undercarriage Cleaners
- And More!







**Don't Let Your  
Expensive Guns  
Look Like This...**



**Avoid Stock &  
Bluing Wear!**

**Fine Hunting & Shooting  
Accessories.**

**The Best Protection For  
All Your Towables.**



**TOWTECTOR**  
PROUDLY MADE IN THE USA BY RUGGED GEAR  
THE ULTIMATE TOWING PROTECTION SYSTEM



An aerial photograph of a large industrial facility. The main building is a long, white, single-story structure with a grey roof. To the left of the building is a large lot filled with many small, dark-colored vehicles, possibly cars or motorcycles. To the right of the building is a large parking lot filled with many cars. Further to the right is another large lot filled with various pieces of heavy machinery, including excavators and trucks. The facility is surrounded by green grass and some trees. In the background, there are other buildings and a road.

# **Kolberg-Pioneer, Inc.**

Yankton, S.D.





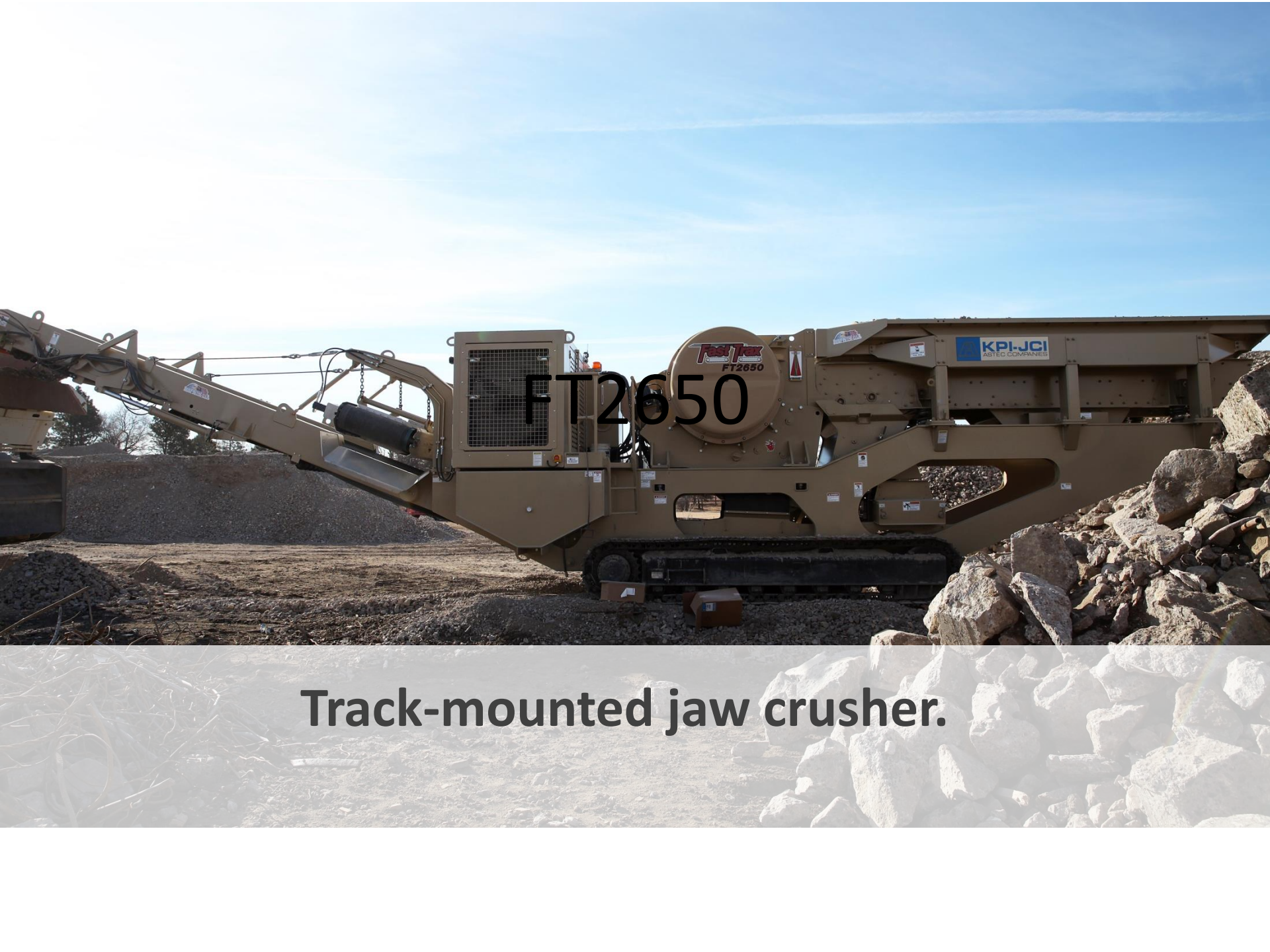
**SuperStacker™**

**Extendable stacking conveyor for stockpiling.**





**Track-mounted impact crusher.**



FT2650

Track-mounted jaw crusher.





## Series 1800 Plant

**Portable plant for washing and  
classifying.**





# Pugmill

**Wheel-mounted plant for processing cold asphalt.**





CHEESE FACTORY

Milbank, South Dakota

**Valley Queen Cheese produces 140 million lbs. of cheese every year**





**Valley Queen Cheese picks up 4 million lbs.  
of milk every day from dairies in Minnesota  
and South Dakota**





**The warehouses at Valley Queen Cheese hold over 15 million lbs of cheese**







CHEESE FACTORY





In South Dakota, Daktronics utilizes  
**409,007 square feet** of manufacturing  
space out of a total of **900,007 square feet**  
at its Brookings and Sioux Falls facilities.



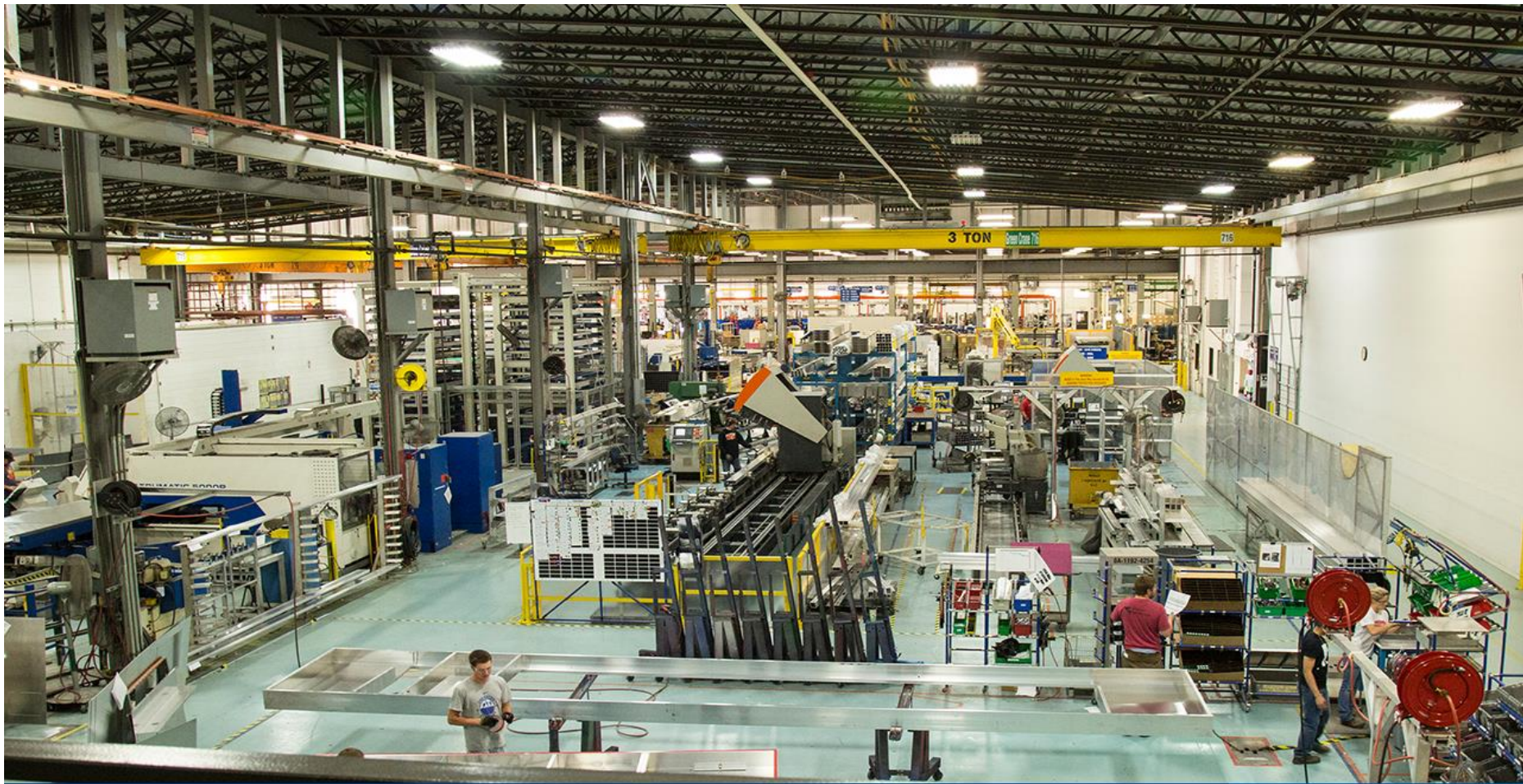




The Jacksonville Jaguars EverBank Field holds the **largest video scoreboard in the world**, built at Daktronics in Brookings, SD.







In South Dakota, Daktronics employs **1,930**  
**employees, 760** in manufacturing alone.







Daktronics is headquartered in  
**Brookings, SD** with additional offices  
in **16** countries.





Daktronics is the **2nd largest manufacturing employer** in the state of South Dakota.







# XPEDITION<sup>TM</sup> ARCHERY

XpeditionArchery.com

X-Ring VI

Xplorer

XPLORER X-RING VII

X-Ring VII

**Specifications:**  
Draw Length 27" - 30"  
Draw Weight Up to 338 lbs  
Weight Approximately 3.9 lbs.  
Let-Off 75%  
Draw Weights 50.00, 65.70

**Specifications:**  
Draw Length 27" - 30"  
Draw Weight Up to 338 lbs  
Weight Approximately 3.9 lbs.  
Let-Off 75%  
Draw Weights 50.00, 65.70

Xpedition Archery display at the Archery Trade Association (ATA) show in Louisville, KY.





Xpedition Archery being interviewed  
about the new style of bow they  
introduced to the market.



## X-RING VI XPLORER



Xpedition Archery bows on display  
These bows are designed for hunting  
as well as competitive archery.





Xpedition Archery bow's are manufactured with precision machining from aluminum components at Applied Engineering in Yankton, SD





Xpedition Archery bow assembly done at  
Applied Engineering in Yankton, SD

# Beginnings



338 years of combined experience

Over 710,000 machines delivered

160,000 first-hand machines in use

120 million hours of operation every year



**GEHL**



1859

**MUSTANG**



1888

**MANITOU**



1957

**MANITOU**  
GROUP



# Manufacturing Sites

## ANCENIS - FRANCE



1500 employees - 323.500 sqm  
Telescopic and mast-mounted forklift trucks

## BEAUPRÉAU - FRANCE



120 employees - 8 000 sqm  
Industrial truck-mounted forklifts

## YANKTON - USA



182 employees - 16 900 sqm  
Skidsteer, telehandler, articulated loaders

## MADISON - USA



295 employees - 24 000 sqm  
Skidsteer, articulated loaders

## WACO - USA



62 employees - 11 600 sqm  
Rough terrain forklift trucks

## CASTELFRANCO - ITALY



240 employees - 58 800 sqm  
Rotating, heavy load, telehandler

## LAILLÉ - FRANCE



89 employees - 46 700 sqm  
Compact telehandlers

## CANDÉ - FRANCE



119 employees - 61 600 sqm  
Access platforms



# Manufacturing / Assembly

## MANUFACTURING

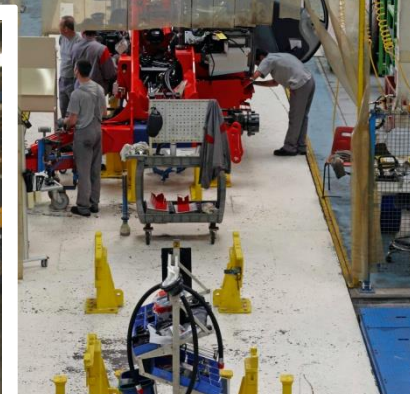


1,700 operators

32 assembly lines

### Professions :

- Welding
- Assembling
- Painting
- Machinery
- Testing & controlling
- Material handling
- Prod. Control & process
- Shipping
- Logistics





# Dealer Network

## DISTRIBUTION



1,400 Dealers

120 Countries

- Manitou
- Gehl
- Mustang



## UNITED STATES



## EUROPE



## ASIA



## AUSTRALIA



# Parts Distribution Centers

**ANCENIS (France)**



**Created**  
2007

**Area**  
34.000 sqm

**Customer service level**  
95%

**Suppliers**  
650+

**Orders / day**  
1.500+

**BELVIDERE (USA)**



**Created**  
2000

**Area**  
101.000 sq ft

**Customer service level**  
93%

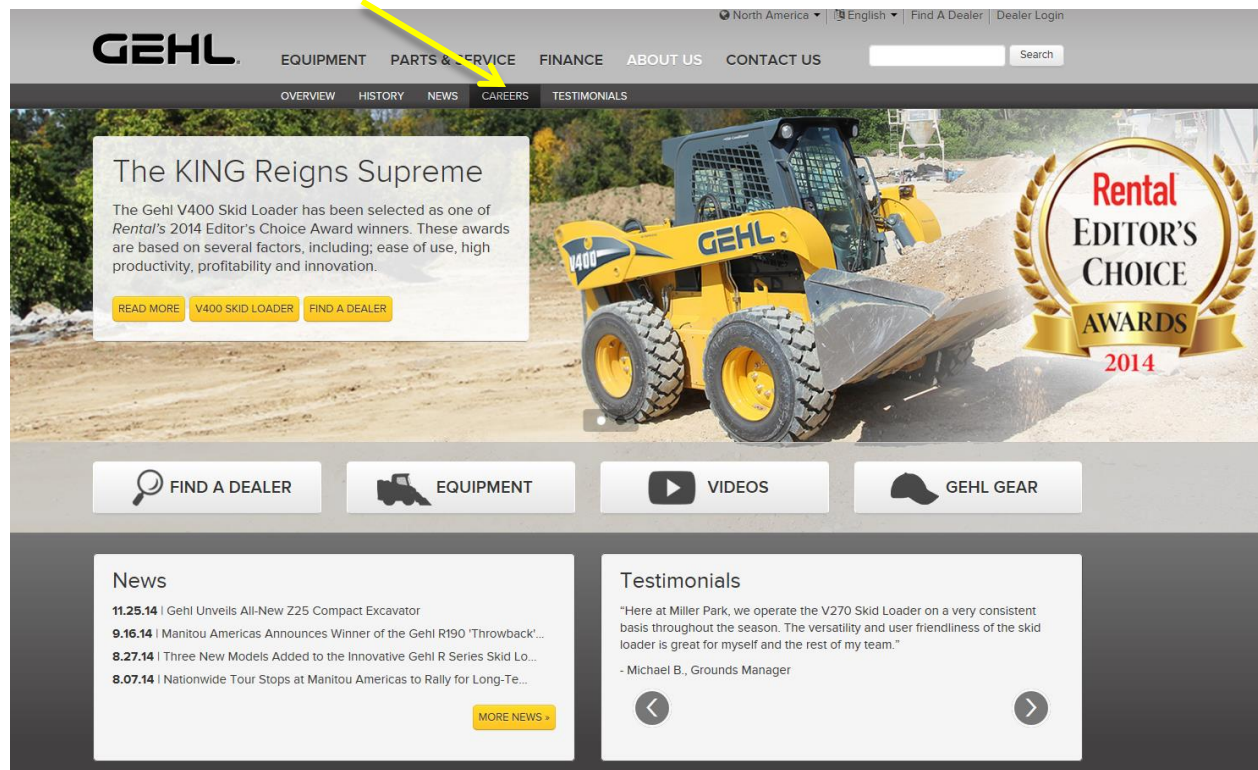
**Suppliers**  
450+

**Orders / day**  
350+



# Careers

- Visit Gehl.com for career opportunities!





A photograph of the Applied Engineering, Inc. facility in Yankton, SD. The image shows a large, single-story industrial building with a tan-colored facade and several windows. In the foreground, there is a green lawn with some bushes and a blue sign that reads "APPLIED ENGINEERING". A tall flagpole with an American flag and a blue flag is visible on the left side of the building. The sky is blue with some white clouds.

Applied Engineering, Inc.

Yankton, SD

Est. 1965

Recently expanded to a 91,000<sup>2</sup> ft facility

Skilled 170+ Workforce

Manufacture for Aerospace, Military, Archery and  
Medical Industries

[www.appliedeng.com](http://www.appliedeng.com)





Technology is  
the key to our  
success!





Technology is factored  
into every aspect of  
production.





Every employee  
needs technical  
training.





Whether it is from a technical school or on the job training.





It takes seven years of on the job training to equal a two year technical school degree.



**CANADA**

**SPAIN**

**MALAYSIA**

**PUERTO RICO**

**SINGAPORE**



The previous slide listed  
the countries where  
Applied Engineering  
does business

The next slide  
demonstrates the reach of  
other South Dakota  
Manufacturers

